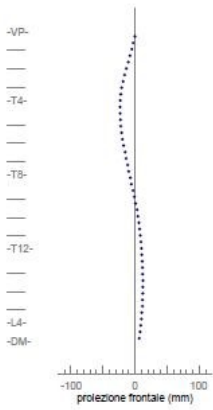
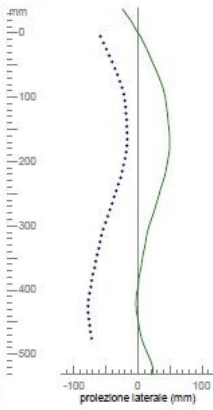
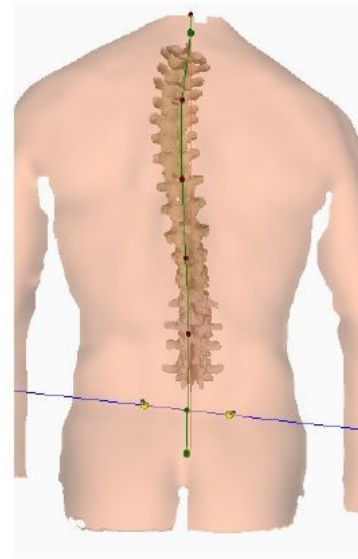
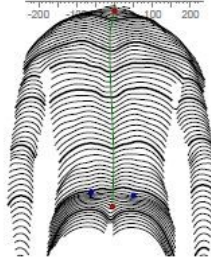


lunghezza tronco VP-DM 481 mm  
 flessione antero-posteriore VP-DM 7 mm  
 flessione laterale VP-DM 5 mm R  
 inclinazione pelvica DL-DR 12 mm L  
 torsione emibacini DL-DR -3 °  
 antero-retroversione pelvica - °  
 rotazione superficie (rms) 9 °  
 rotazione superficie (+max) 18 ° R  
 rotazione superficie (-max) 1 ° L  
 deviazione laterale VPDM (rms) 15 mm  
 deviazione laterale VPDM (+max) 3 mm R  
 deviazione laterale VPDM (-max) 28 mm L

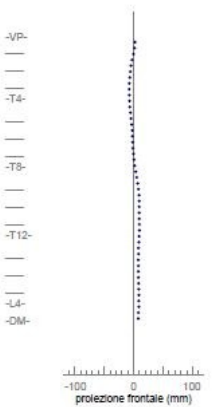
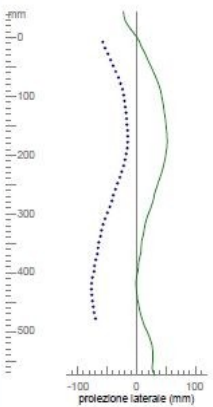
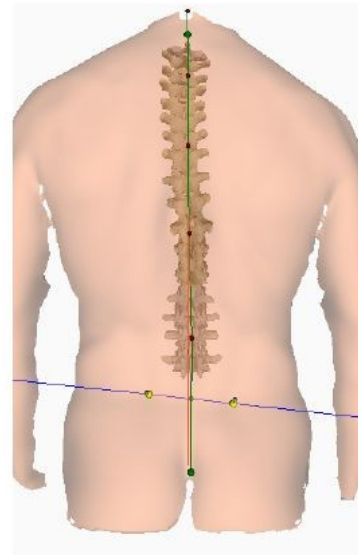
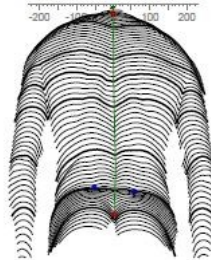
481 mm  
 7 mm  
 5 mm R  
 12 mm L  
 -3 °  
 - °  
 9 °  
 18 ° R  
 1 ° L  
 15 mm  
 3 mm R  
 28 mm L



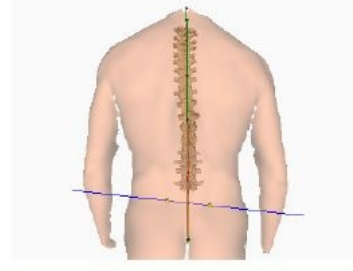
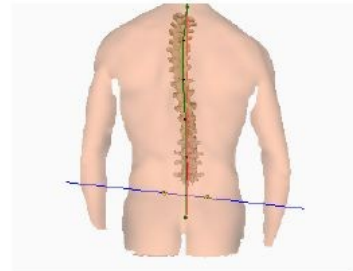
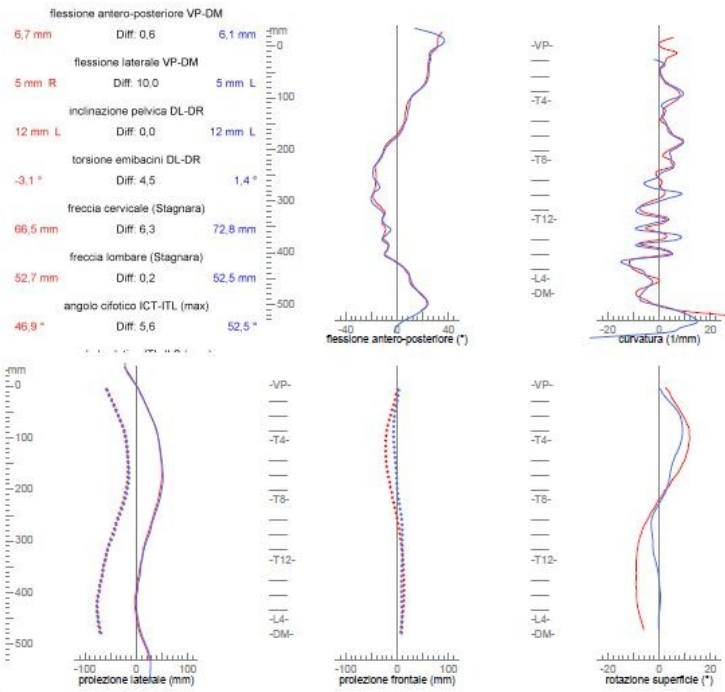
Doct. Giovanni Chetta, Via dei Cacciatori 12, 20043 Arcore (MI), tel. 039 6014575, info@giovannichetta.it, www.giovannichetta.it

lunghezza tronco VP-DM 483 mm  
 flessione antero-posteriore VP-DM 6 mm  
 flessione laterale VP-DM 5 mm L  
 inclinazione pelvica DL-DR 12 mm L  
 torsione emibacini DL-DR 1 °  
 antero-retroversione pelvica 18 °  
 rotazione superficie (rms) 4 °  
 rotazione superficie (+max) 9 ° R  
 rotazione superficie (-max) 3 ° L  
 deviazione laterale VPDM (rms) 6 mm  
 deviazione laterale VPDM (+max) 4 mm R  
 deviazione laterale VPDM (-max) 11 mm L

483 mm  
 6 mm  
 5 mm L  
 12 mm L  
 1 °  
 18 °  
 4 °  
 9 ° R  
 3 ° L  
 6 mm  
 4 mm R  
 11 mm L



Doct. Giovanni Chetta, Via dei Cacciatori 12, 20043 Arcore (MI), tel. 039 6014575, info@giovannichetta.it, www.giovannichetta.it



09/09/2009 16.44.40 FIII\_Average3D

15/04/2010 12.43.09 FIII\_Average3D -